

# ATTACHED PILASTER SECTION

M



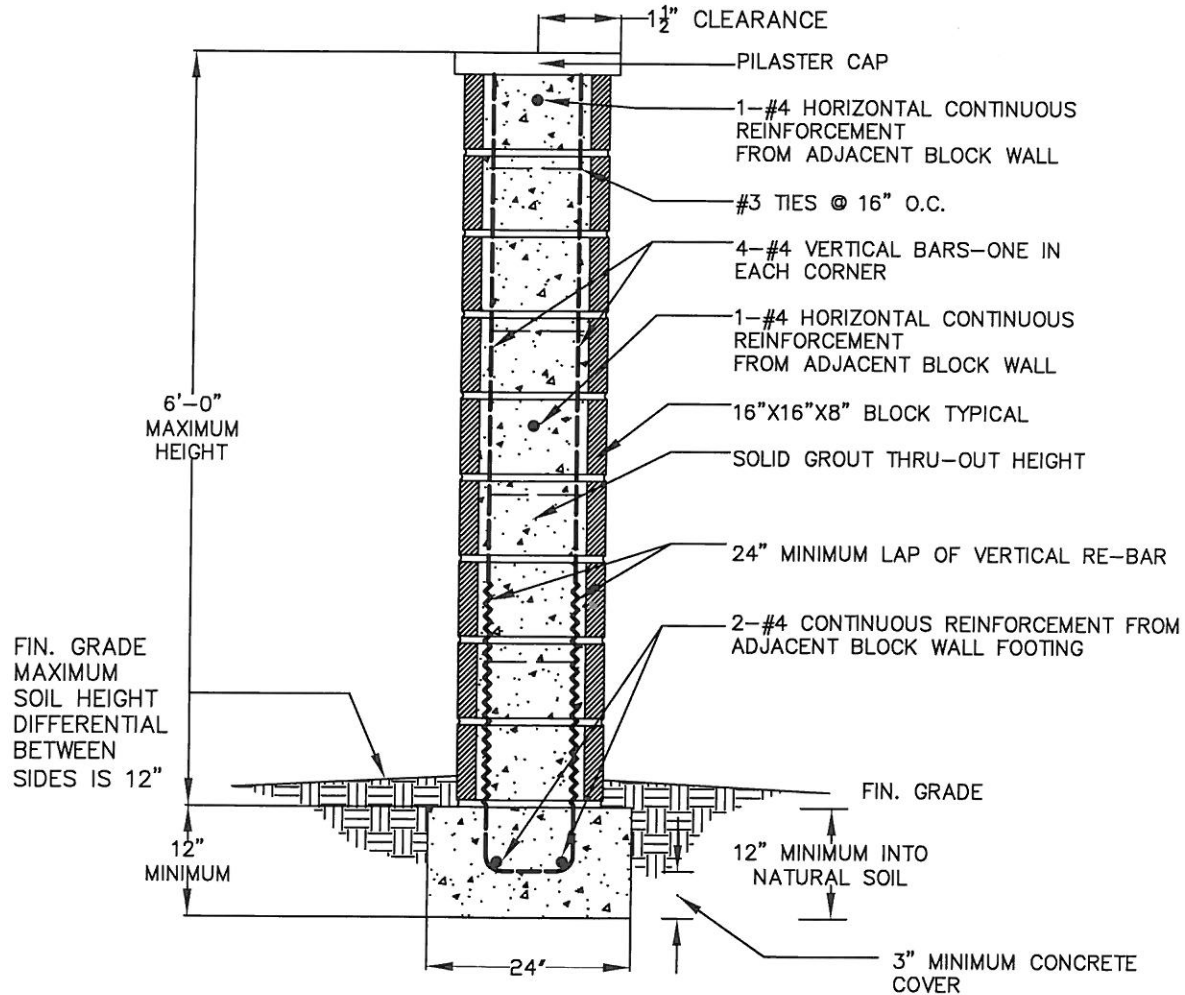
## CITY OF FULLERTON

COMMUNITY DEVELOPMENT DEPARTMENT

303 W. COMMONWEALTH AVENUE

FULLERTON CA 92832

(714) 738-6541



## PILASTER SECTION

INSTALLED IN CONJUNCTION WITH STANDARD BLOCK WALL.  
NOT APPROVED FOR STAND-ALONE PILASTER.